

READ ME FIRST

# QUICK INSTALL GUIDE



## 5-Port Gigabit Switch XGS-1005

### Includes:

- ▶ XGS-1005 5-Port Gigabit Switch
- ▶ Power Adapter

LUXUL™

# INSTALLATION AND SETUP

## 1 Physical Installation

Install the XGS-1005 in a stable/safe place to avoid any possible damage. Avoid placement in direct sunlight and do not place heavy articles on the XGS-1005.

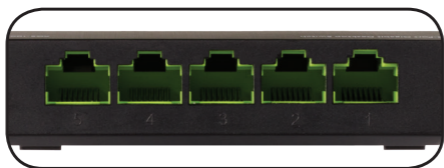
Ensure there is adequate space for proper heat dissipation and ventilation around the switch.



*XGS-1005 Front Panel and Side View Showing Ventilation*

## 2 Connecting Power

Connect the included AC power adapter to a power outlet near the XGS-1005, then connect the power adapter plug to the switch power connector.



*XGS-1005 Rear Panel Detail View*

---

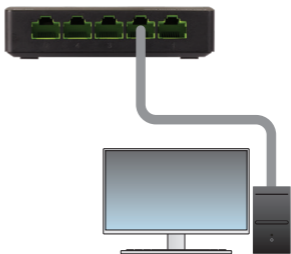
**⚠ CAUTION:** *Use only the included power supply. If a different power supply is used, it could damage the XGS-1005.*

---

## 3 Connecting Ethernet

### Connecting Devices

Use standard Ethernet cable to connect the XGS-1005 to Ethernet devices as shown below. Luxul recommends at least Cat-5e unshielded twisted pair (CAT5e UTP) cabling. To ensure best performance and stable data transmission at 1000 Mbps, use Category-6 unshielded twisted pair (CAT6 UTP).

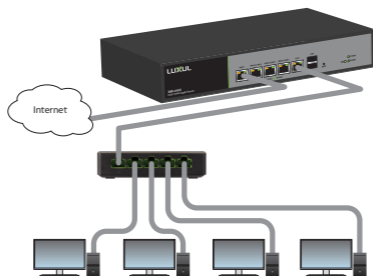


*Connecting the XGS-1005 to a Device*

When a device is properly connected, the Link/Activity LED for the port to which the device is connected lights up green. Please refer to the section on LED Indicators for definitions and troubleshooting.

## Connecting to a Router or Other Switch

For best performance, and to maximize available ports, Luxul recommends connecting LAN devices to the XGS-1005, then connecting the switch to a router LAN port or another switch as shown in the illustration.



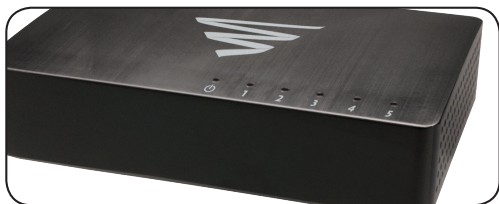
*Connecting the XGS-1005 to a Router or Switch*

When the XGS-1005 is properly connected to a router or switch, the Link/Activity LED for the appropriate port lights up green. Refer to the section on LED Indicators for definitions and troubleshooting.

## 4 Hardware Description

### Front Panel

The front panel of the XGS-1005 includes five Link/Activity LEDs and one Power LED. For more information on these LEDs, refer to the table describing these indicators in the next section.



*XGS-1005 Front Panel View*



*XGS-1005 Rear Panel View*

## 5 LED Indicators

The LED indicators of the XGS-1005 include one Power indicator and 5 Link/Activity indicators. These LED indicators show the operating status of the XGS-1005 and each switch connection.

The following chart shows the LED indicators of the XGS-1005 along with a description of each indicator:

| LED               | Color | Status   | Description                                                                                              |
|-------------------|-------|----------|----------------------------------------------------------------------------------------------------------|
| Power             | Green | On       | The switch is powered.                                                                                   |
|                   |       | Off      | The switch is unpowered. Check the DC power supply to ensure proper connection to the outlet and switch. |
| Link/<br>Activity | Green | On       | The switch is connected to an Ethernet device.                                                           |
|                   |       | Blinking | The switch is transmitting/receiving data packets.                                                       |
|                   |       | Off      | Indicates the port is not connected to an Ethernet device.                                               |

## Sales

P: 801-822-5450

E: sales@luxul.com

## Technical Support

P: 801-822-5450 Option 3

E: support@luxul.com

### Copyright and Trademark Notices

No part of this document may be modified or adapted in any way, for any purposes without permission in writing from Luxul. The material in this document is subject to change without notice. Luxul reserves the right to make changes to any product to improve reliability, function, or design. No license is granted, either expressly or by implication or otherwise under any Luxul intellectual property rights. An implied license only exists for equipment, circuits and subsystems contained in this or any Luxul product.

© Copyright 2017 Luxul. All rights reserved. The name Luxul, the Luxul logo, the Luxul logo mark and Simply Connected are all trademarks and or registered trademarks of Luxul Wireless, Inc. All other trademarks and registered trademarks are property of their respective holders.

LUX-QIG-XGS-1005-v4 06271701

A brand of  **legrand**<sup>®</sup>

